



ANAGELINE® Bio

A nutritive and revitalizing cocktail of natural origin for the bulb and hair, consisting of an organic vegetal extract rich in peptides, trace elements, and vitamins

Mechanism of Action

- Inhibits 5 α -reductase activity, limiting the transformation of testosterone into DHT.
- Increases vascular density around the hair follicle, facilitating the supply of oxygen and nutrients.
- Stimulates the differentiation capacity of hair bulb cells and favors keratinization.

Efficacy and Benefits

- Regulates the hormonal balance
- Improves the microcirculation of the scalp
- Hair density returns to normal
- Reduces hair loss

*Clinically validated triple action

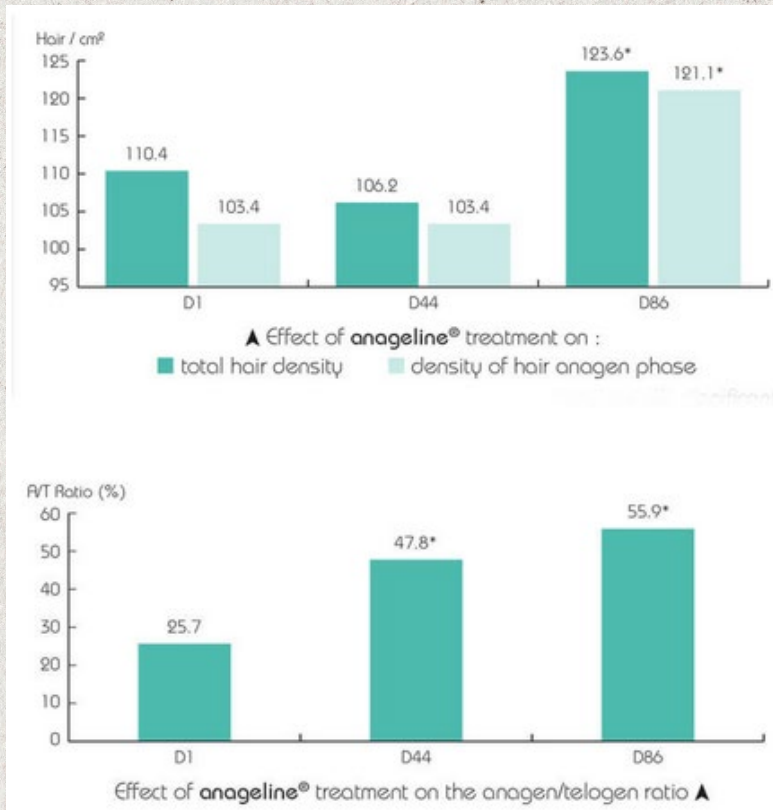
ANAGELINE® slows hair loss

Anti-hair loss effect

Phototrichogram method

16 male volunteers between 18 and 65 years of age with slight to moderate baldness. The aim of this study was to determine the action of **anageline®** tested at 10% in lotion on reducing the rate of excessive hair loss.

After 12 weeks of treating balding subjects with **anageline®**, the hair density and the anagen/telogen ratio both stabilized, showing a significant action on reducing hair loss (see figures below)



*Statistically significant increase compared to D1



CAPIXYL™

The patented complex composed by a biomimetic peptide of four amino acids and red clover extract rich in Biochanin A

Mechanism of Action

- Red clover (*Trifolium pretense*) was traditionally used to treat inflammatory skin disorders such as eczema & psoriasis.
- Red Clover Extract is naturally rich in Biochanin A.
- Biochanin A is an effective inhibitor of 5- α -reductase activity.
- Acetyl Tetrapeptide-3 4 amino acids biomimetic peptide derived from a signal peptide which stimulates tissue remodeling.

The peptide has a direct effect on the hair follicle. Acetyl Tetrapeptide-3 stimulates dermal papilla extracellular matrix proteins and has a direct effect on hair follicle size and anchoring.

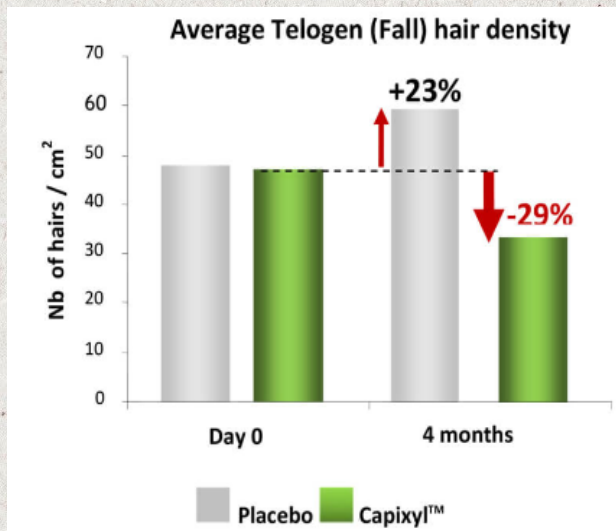
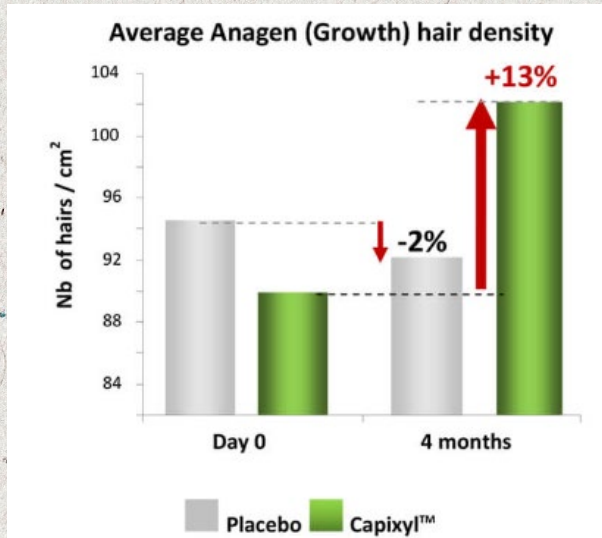
Efficacy and Benefits

- Biochanin A (Red Clover) inhibits 5 – alfa reductase reducing DHT production: No follicles miniaturization. Normalization of the hair cycle.
- Acetyl Tetrapeptide-3 (biomimetic peptide) Stimulates ECM proteins synthesis and collagen production increasing hair follicle size and improving dermal anchoring.
- The complex constituted by Biomimetic peptide + Red Clover Extract decreases pro-inflammatory cytokines level. Inflammation reduction.

*Clinically validated triple action

Clinical efficacy

CAPIXYL™ increases anagen hair density & decreases telogen hair density



Clinical efficacy

CAPIXYL™ increases both length & density of eyelashes

5 times longer



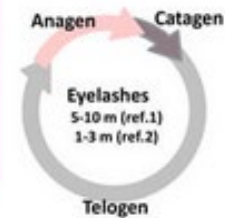
Increase density



+ 45% new lashes

93% satisfaction

| | Anagen Growth phase | Catagen Transition phase | Telogen Resting phase | Growth rate |
|----------------------|--|--|--------------------------|------------------|
| Hair follicle | 2-6 years 70 – 85% hair | 100 days 15-30% hair | | 0.3-0.4 mm daily |
| Eyelashes | 1 – 3 m (ref.1) 22-55 d (ref.2) 15-40% | 4-9 m (ref.1) ~2 m (ref.2) 60-85% lashes | | 0.12 mm daily |



KAPILARINE®

The vegetal complex composed by extracts from four different plants: *Kigelia Africana*, *Ginkgo Biloba*, *Salvia Sclarea*, *Zeylanicum Cinnamon*, working in synergy and help to rebalance scalp's condition and limit hair loss

Mechanism of Action

- Kigelia fruits contain saponoids and flavonoids with hormone-like properties which contribute to inhibit 5- α reductase and stimulate dermis cells activity. Flavonoids, in particular, have vein tonic action that stimulates scalp microcirculation.
- Salvia exhibits strong anti-oxidant and anti-inflammatory properties.
- Cinnamon has anti-bacterial efficacy and soothing action.
- Ginkgo Biloba improves tissue hydration and helps to activate cellular metabolism.

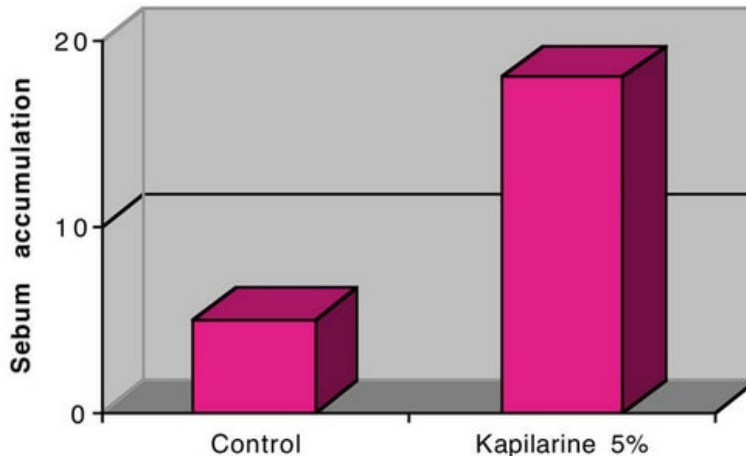
Efficacy and Benefits

KAPILARINE® acts synergistically on the main factors avoiding hair loss:

- 5- α reductase inhibition
- Scalp microcirculation improvement
- Dermis regeneration by activating cellular metabolism
- Decrease inflammation and consequently helps to reduce seborrhea

Effect of Kapilarine® in microcirculation of skin

*Clinically validated triple action



Microcirculation was evaluated by measuring the cutaneous thermal conductivity ($\text{mW}/\text{cm}^{\circ}\text{C}$) on 5 lumbar part of the back of 10 volunteers, 60 minutes after application of Kapilarine at 5%. Measurement was done on back skin because it was easier than done directly on the scalp.